



# MONTHLY MEMBERSHIP PROGRESS REPORT

District A 1

Results as of: 8/31/2015

GMT: CHRIS LEWIS

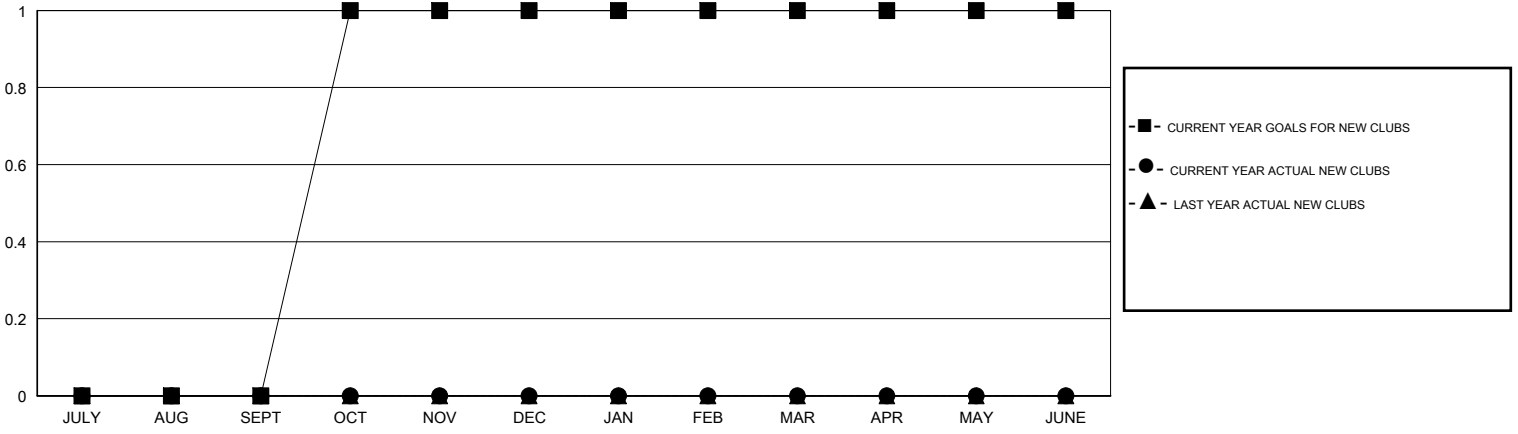
LOCATION ONTARIO

GMT CA 2

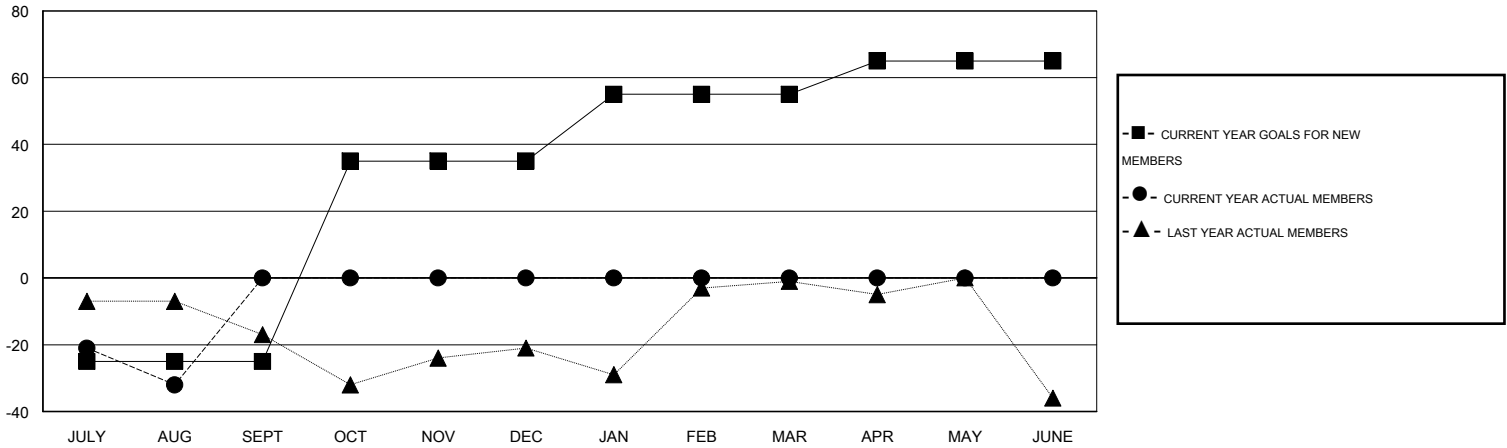
| Clubs                 |               |           |               |               |
|-----------------------|---------------|-----------|---------------|---------------|
| RESULTS FOR 2015-2016 |               |           |               |               |
| QUARTER               | NEW CLUB GOAL | NEW CLUBS | DROPPED CLUBS | NET GAIN/LOSS |
| JULY/AUG/SEPT         | 0             | 0         | 0             | 0             |
| OCT/NOV/DEC           | 1             | 0         | 0             | 0             |
| JAN/FEB/MAR           | 0             | 0         | 0             | 0             |
| APR/MAY/JUNE          | 0             | 0         | 0             | 0             |

| Members               |                 |                               |                 |               |
|-----------------------|-----------------|-------------------------------|-----------------|---------------|
| RESULTS FOR 2015-2016 |                 |                               |                 |               |
| QUARTER               | NEW MEMBER GOAL | CHARTER AND NEW MEMBERS ADDED | DROPPED MEMBERS | NET GAIN/LOSS |
| JULY/AUG/SEPT         | -25             | 4                             | 36              | -32           |
| OCT/NOV/DEC           | 60              | 0                             | 0               | 0             |
| JAN/FEB/MAR           | 20              | 0                             | 0               | 0             |
| APR/MAY/JUNE          | 10              | 0                             | 0               | 0             |

GOALS AND ACTUAL NEW CLUBS CUMULATIVE



GOALS AND ACTUAL MEMBERS CUMULATIVE



|  |   |   |
|--|---|---|
| DROPPED CLUBS: 0   | 3 CLUBS OF 44 ADDED 1 OR MORE NEW MEMBERS             | <b>GENDER DISTRIBUTION</b><br>MALE 1,000 (81.17%)<br>FEMALE 232 (18.83%)    |
| <b>DROPPED MEMBERS</b><br>DECEASED 7<br>CLUB CANCELLED 0<br>OTHER 29<br>TOTAL 36 | <a href="#">CLICK HERE FOR HEALTH ASSESSMENT DATA</a> | FAMILY UNIT MEMBERS 191<br>HEAD OF HOUSEHOLD 94<br>NON-HEAD OF HOUSEHOLD 97 |